

Charity/Fundraising Events

Fundraising car washes are a summertime tradition, but they can be devastating to our watershed. These events are usually held in heavily paved areas where runoff can easily reach the storm system. Here are ways to hold your car wash safely!

- Whenever possible, choose a place that has grass or gravel for washing.
- Minimize soap use, and choose environmentally friendly detergents.
- Before beginning, remove all trash and debris from the wash area.
- Use a shutoff nozzle on hoses to conserve water.
- Don't wash undercarriages or engine compartments, and do not use degreasers.
- Always empty your soapy buckets into a sink or toilet—never into the lot, street, gutter or drain!
- Call us at 764-3792 for a list of locations that are prohibited. There are a few locations that have direct drainage to the lake. We can help you find the safest way to hold your car wash!
- The easiest way? Partner with a local commercial car wash for a 'Bay for a Day', or sell car wash coupons!

Be smart—do your part!

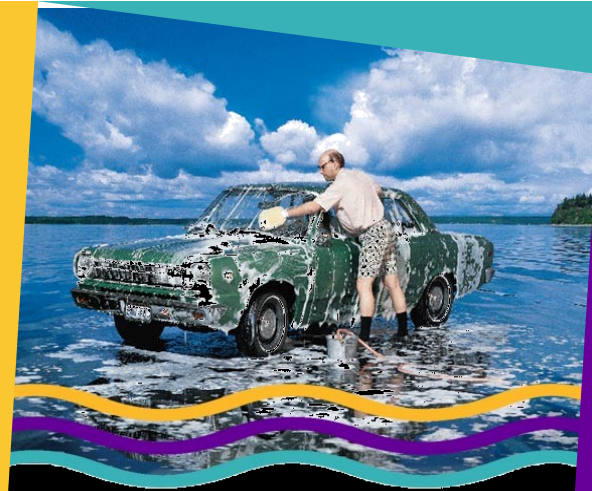


WASHINGTON
waters
OURS TO PROTECT

City of Moses Lake Stormwater Division

321 S. Balsam Ave.
P.O. Box 1579
Moses Lake, WA 98837
Spill Hotline—509.764.3792

Cover graphic courtesy of Puget
Sound Action Team and the
Washington State Department of
Ecology.



**WHEN YOU'RE WASHING
YOUR CAR ON THE
PAVEMENT, REMEMBER
YOU'RE NOT JUST
WASHING YOUR CAR ON
THE PAVEMENT.**

CAR WASHING



What's the problem with washing the car?



It's fine to wash your car; the problem is how and where you do it!

Washing your car in the driveway, parking lots or road allows the soap, dirt, oil and grease to get washed down into the storm drains, which run directly into our wetlands, groundwater, and the lake.

The grime from your car, plus the soap you used to clean it is unhealthy for the water and the creatures living there. The phosphates from the soap can also cause excess algae to grow. Algae looks bad, smells bad, and harms water quality, shortening the lifespan of our lake!



Where do all these storm drains go?

Did you know? Storm drains are NOT connected to the sanitary sewer or the wastewater treatment plant.

Moses Lake has a separate storm sewer system, which carries runoff in many places directly to wetlands and the lake. It's meant for only clean rainwater and snow melt runoff. Pollutants in storm-water get carried through the storm drains directly to our watershed — untreated.



When you wash your car in the driveway, it doesn't just stay in the driveway! Here's how to keep it out of the watershed.

- Wash your car on the lawn where water can soak in.
- Use soap sparingly, and use phosphate free soaps.
- Use a hose nozzle with a trigger to save water.
- Avoid using engine and wheel degreasers.
- Pour your soapy bucket of water in the sink or toilet when you're done—not in the driveway, street or down the storm drain!
- Use commercial car washes whenever you can. These locations discharge to specially treated systems and not to storm drains!



Only rain down the drain!

