

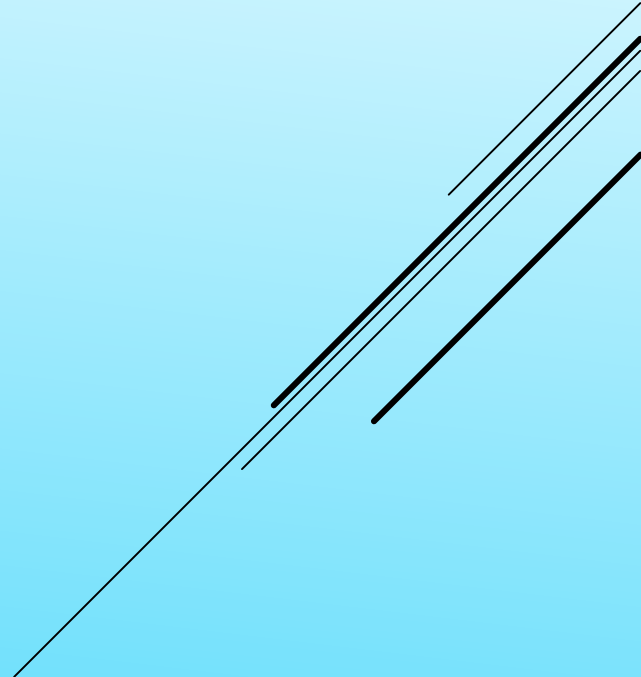
City of Moses Lake

HOMELESS PROGRAM

INITIATED 2019 – IMPLEMENTED 2020

HOMELESS TASK FORCE OF GRANT COUNTY

- ▶ The Mission of the Grant County Homeless Taskforce is to advocate for the homeless people in Grant County in order to improve quality of life, increase public awareness of issues of homelessness, impact public policy and to prevent and end homelessness.
- ▶ With a focus on:
 - ▶ Households who are living unsheltered. This also includes households fleeing domestic violence, or crimes against persons.
 - ▶ Homeless Youth and Children are defined federally as individuals who lack a fixed, regular, and adequate nighttime residence (42 U.S.C. § 11434a(2)).



HOMELESSNESS IN GRANT COUNTY

▶ Point-In-Time Homeless Count

- ▶ In 2019, 82 people are homeless within Grant County at any given moment. Additionally, 68 people are currently in shelter care. 63% were in the City of Moses Lake.

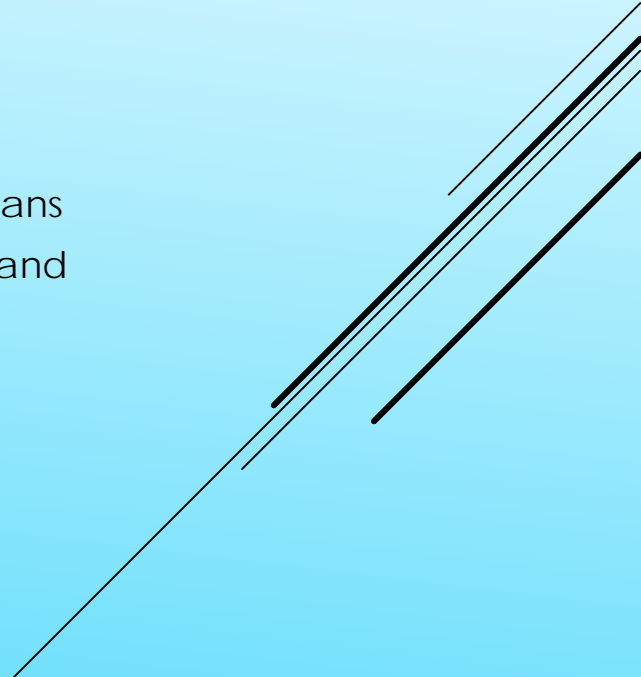
▶ Grant County's Vacancy Rates

- ▶ The county lacks adequate vacancies to ensure available housing. Grant County has a 5% vacancy rate.

▶ Lack of Community Resources

- ▶ Extremely low availability for affordable housing
- ▶ Long wait lists, and unrealistic timelines for Public Housing and Section-8 voucher programs.
- ▶ Need for permanency programs to assist with housing stability.

COMMUNITY RESOURCES IDENTIFIED IN MOSES LAKE

- ▶ Serve Moses Lake – *Motel* vouchers, rent assistance, application fees, utility assistance
 - ▶ Opportunities Industrialization Center (OIC) Utility assistance, housing services for eligible farm workers
 - ▶ Salvation Army – One-time motel voucher
 - ▶ Veteran’s Coalition of Grant County – Limited housing services for veterans
 - ▶ Grant Integrated Services: Various outreach, housing stability planning and case management.
 - ▶ New Hope – Limited to domestic violence
 - ▶ Grant County Housing Authority – Housing for homeless families/motel vouchers/coordinated entry
- 

MOSES LAKE ADDS HOPESOURCE CONTRACT FOR SERVICES JUNE 2020

City of Moses Lake's Contract Meeting Homeless Plan Objectives:

Objective 1: Quickly Identify and Engage People Experiencing Homelessness.

Objective 2: Prioritization of Homeless Housing for People with the Highest Needs.

Objective 3: Effective and Efficient Homeless Crisis Response and Housing Services.

June Contract is for Homeless Outreach with a goal of developing temporary and long term options.

HOMELESS SITE OPTIONS – MAY 2020

CONSIDERATION OF LONGVIEW TRACTS

2019 Homeless Committee
work:

Before city decided on
Longview Tracts, four other
locations were considered

Other spots discussed

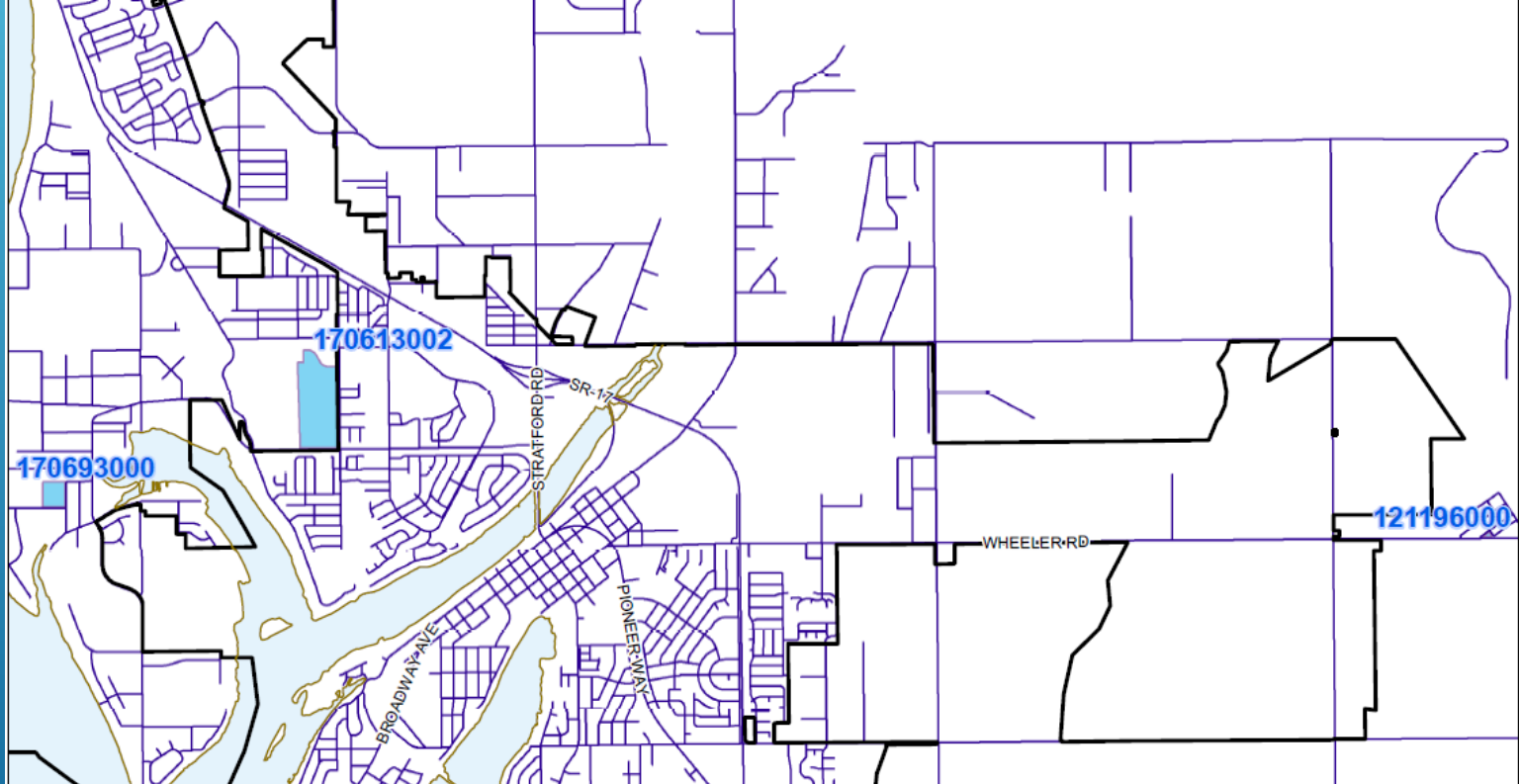
- Vacant building near the intersection of West Broadway Avenue and state Route 17
- Vacant church on East Nelson Road
- Two parcels of land next to The Home Depot
- Vacant property near Blue Heron Park

WORK SINCE MAY 26

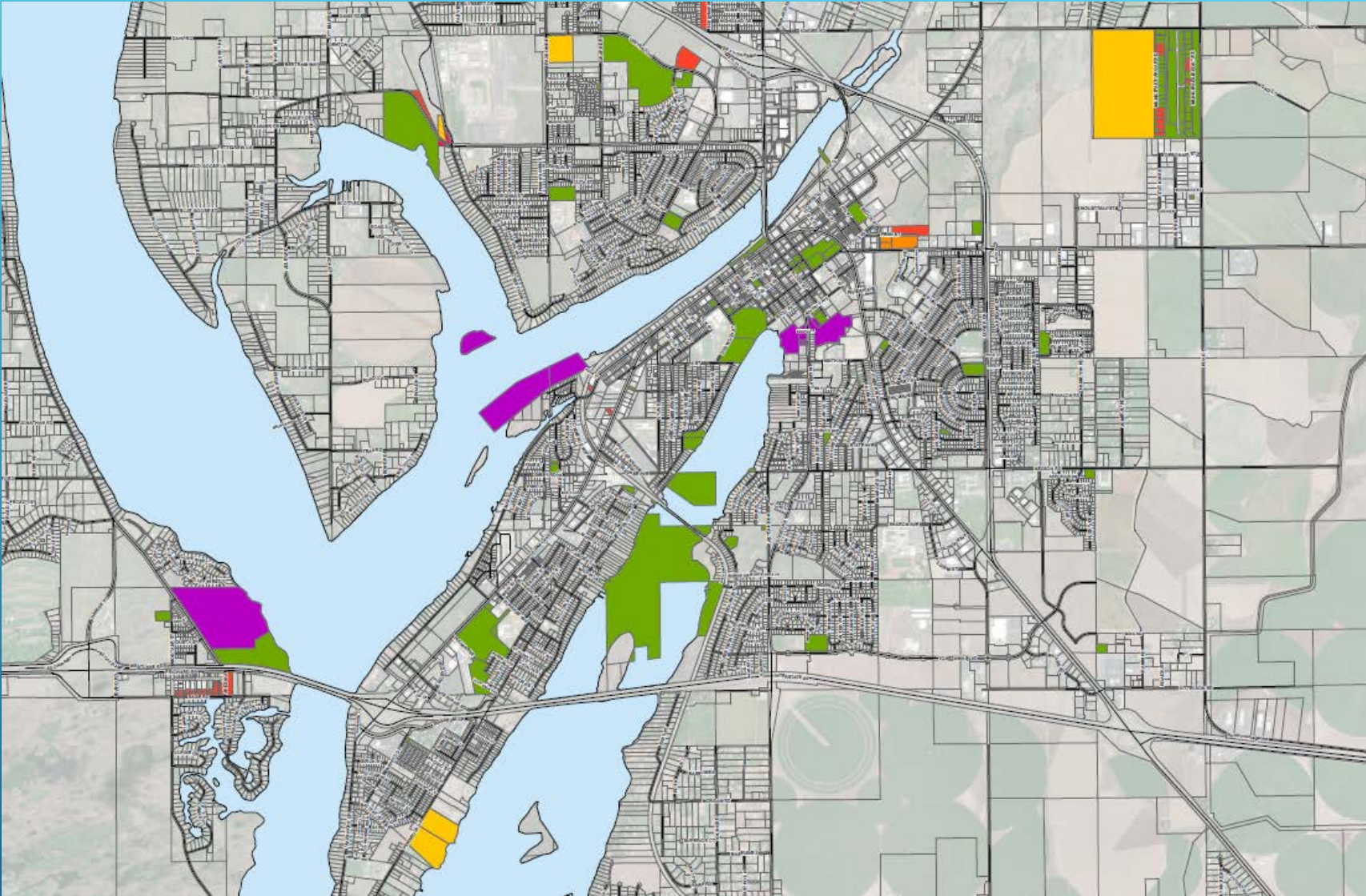
- ▶ Funding Sources put together with Grant County/Hopesource
- ▶ Hopesource optioned hotel property with 30 units to help emergency shelter and long term housing needs of the City
- ▶ Outreach continues
- ▶ Temporary need still exists:
 - ▶ In 2019, 82 people were homeless within Grant County at any given moment
 - ▶ With the advent and ongoing impact of COVID, numbers are expected to increase

COVID-19	\$170,000
CARES Act	\$175,000
Emergency Shelter Funds	\$522,000
Total	\$867,000

NEW SITES CONSIDERED – SCHOOL DISTRICT



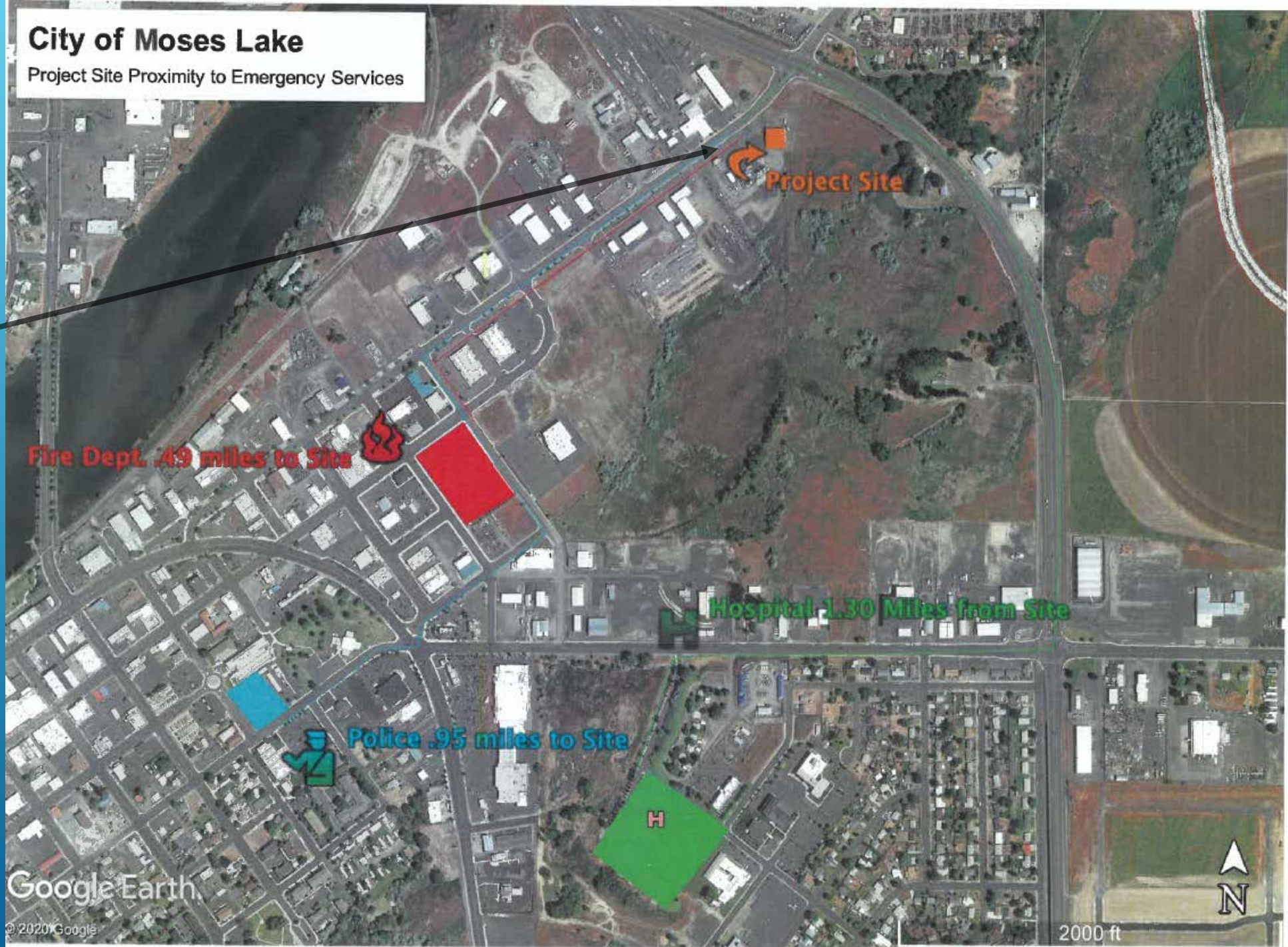
CITY OWNED




City of Moses Lake

Project Site Proximity to Emergency Services

PRIVATE SITE
OFFERED WITH
FAVORABLE
LEASE




SITE AMENITIES

- ▶ Proximity to services
 - ▶ Site can be cleared, fenced and security cameras installed
 - ▶ Water and sewer can be available
 - ▶ Utilize 8 x 8 small stick-built shelters
 - ▶ Hopesource for camp management
 - ▶ Evening hours with security
 - ▶ Commitment from community to provide care
- 

COUNCIL DIRECTION REQUESTED:

- ▶ Move forward with lease negotiation
 - ▶ Purchase housing units / procure shower/bath facilities
 - ▶ Engage community to help

 - ▶ Questions?
- 
- A decorative graphic consisting of several parallel white lines of varying lengths, slanted diagonally from the bottom right towards the top right, located in the lower right quadrant of the slide.